



BetaVac 4024 Range

The world's choice in
cheese packaging.

The Mercer BetaVac range has become the industry standard for over 30 years. During this time the dairy industry has put its faith in the Mercer BetaVac design and rugged build quality. Hundreds of units have been installed world-wide with some of the biggest names in dairy. The range of Mercer BetaVac can package, 10kg (20lb) cheese blocks, 20kg (40lb) cheese blocks and Cheese off-cuts and other loose product.





- Superior Safety - CE & AS4024 compliance
- Ethernet data system
- USDA & CE Approval
- Quick-change seal bar
- Easy Set HMI & with new built-in help features
- Rugged dependable platform from the industry experts

BetaVac 4024 - Features

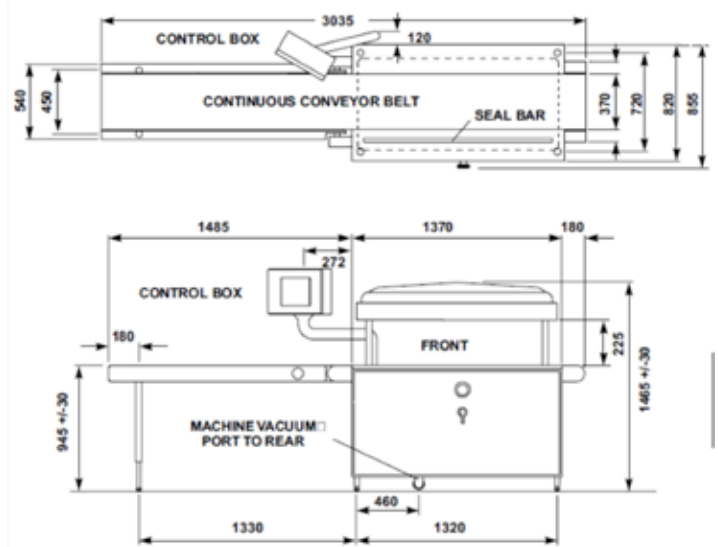
- Lid Up Lock System - if air is lost the lid will be locked by a mechanical stop. The lid up safety is independent of the PLC, however it's operation is monitored by the PLC Required for New Zealand & Australia to meet standard AS 4024
- Chamber safety ring surrounding the lid is designed to float, and now has an addition of four individual switches, on a twin circuit safety rated circuit.
- USDA approved belting with sealed edges
- Machines are CE approved
- Allen Bradley operator interfaces
- Help tabs to for trouble shooting & set-up
- On/off vacuum pump control is available from the HMI
- All models, except for the Mk2 -502, come with a 6" colour touch screen
- AB Micrologix PLC that interfaces with safety system on the Chamber lid loss of air arresting system
- Ethernet capability & data capture
- Rugged stainless steel components, minimise maintenance costs
- Sturdy stainless steel bag flap guide with pneumatic guide bar bridge to maintain correct presentation of bags to sealer
- Fully machined (electro/pneumatic belt tensioner) for ease of cleaning, and joining of replacement belt Sumitomo "Cyclo Drive" electric motor / gear box. Soft vent vacuum valves & silencer included, reducing the risk to operators well-being
- Machines can be handed left or right or both. An extra seal bar is supplied
- The seal bar temperature control is very accurate, monitoring the temperature without a temperature sensor, ensuring accurate easy adjustment. When elements are changed, auto calibration is run from the HMI
- Standard Mercer BetaVac units are fitted with an anodised aluminium heavy base plate. A stainless steel option is available
- Norgren Pneumatics as standard - other options available on application



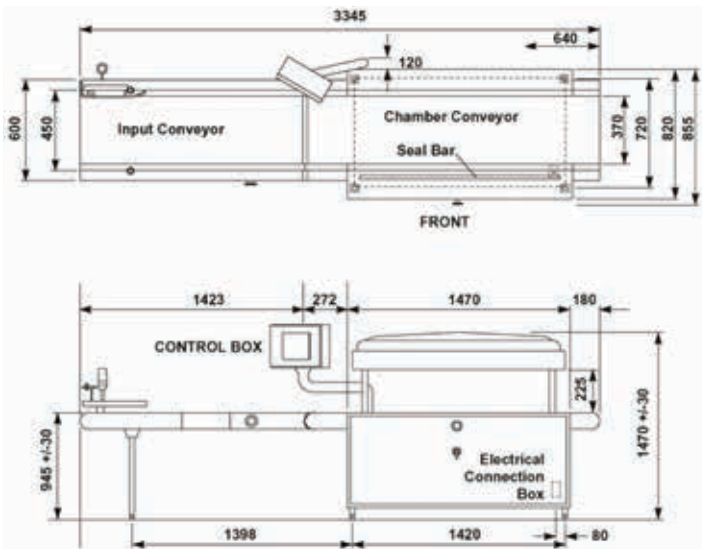
New Mercer BetaVac options available

- Alternative pneumatic brands options
- Stainless base plate, over standard aluminium plate
- Ethernet data capture available & software, or standard RS232
- Integration with BetaTest leak detector unit for single HMI

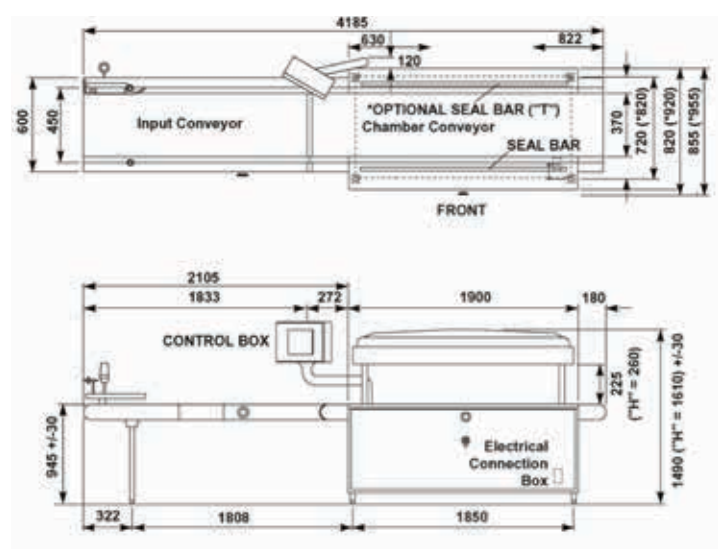
Mercer BetaVac Mk2 502 (3 bags)



Mercer BetaVac Plus (4 bags)



Mercer BetaVac Super Plus (5 bags)



Seven Models handle a variety of throughputs and with varying degrees of Automation

Full refurbishments and upgrades available.

	Mk2 502	PLUS	SUPER	SUPER PLUS	SUPER PLUS H	SUPER PLUS T	SUPER PLUS TH
Product placing	Manual	Automatic	Automatic	Automatic	Automatic	Automatic	Automatic
Left hand or right hand feed	Optional	Optional	Optional	Optional	Optional	Optional	Optional
Evacuation operation	Adj. Timer	Time/Vac	Time/Vac	Time/Vac	Time/Vac	Time/Vac	Time/Vac
Seal operation	Adj. Timer	Time/Temp	Time/Temp	Time/Temp	Time/Temp	Time/Temp	Time/Temp
Anvil height	Adjustable	Adjustable	Adjustable	Adjustable	Adjustable	Adjustable	Adjustable
Seal bar height	Adjustable	Adjustable	Adjustable	Adjustable	Adjustable	Adjustable	Adjustable
Spare seal bar	Yes	Yes	Yes	Yes	Yes	Yes	Yes
Gusseted bags per cycle	3	4	5	5	5	5	5
Layflat bags per cycle (width mm)	2 x 500	2 x 400	3 x 500	3 x 522	3 x 522	3 x 530	3 x 530
Water cooled seal bar	Yes	Yes	Yes	Yes	Yes	Yes	Yes
Sealed edge conveyor belt	Yes	Yes	Yes	Yes	Yes	Yes	Yes
Allen Bradley PLC	ML 1500	ML 1500	ML 1500	ML 1500	ML 1500	ML 1500	ML 1500
Allen Bradley operator interface	PV300	PV550	PV550	PV550	PV550	PV550	PV550
Belt tensioner	Manual	Elec/Pneu	Elec/Pneu	Elec/Pneu	Elec/Pneu	Elec/Pneu	Elec/Pneu
Approx. cycles per minute	2.5	2.5	2.5	2.5	2.5	2.5	2.5
Max. product height (mm)	200	200	200	200	235	200	235
No. of seal bars and anvils	1	1	1	1	1	2	2

In addition to bulk materials handling Mercer Stainless specialises in the production of stainless steel equipment for the Dairy, Meat, Food Processing, Chemical and Pharmaceutical, Brewing, Pulp and Paper, Mining and Forestry industries. Mercer engineers solutions to meet client requirements and exceed their expectations. This is accomplished by building on our stainless steel, control technology, and process know-how with a large variety of materials and innovative manufacturing solutions. We are continually developing new patented solutions for industry.

Products and services on offer:

Bulk Materials Handling

Bulk bag loading
Unloading stations
Bin tippers
Bin discharges
Bag break stations
Screw feeders
Bag compactors
Hoppers and feeders
Bulk bag conditioners

Materials Handling

HMPS palletisers
Conveyors
Elevators
Singlisers
Accumulators
Pallet handling
Scissor lifts
PIAB Powder transfer systems
Enmin Vibratory feeders & graders

Packaging Equipment

HMPS case packers pick & place
& cartoning solutions
BetaVac cheese vacuum packers
Lineal weighing equipment
Auger fillers
Carton ladders
Carton erectors –all types
Carton closers
Meat compactors
Meat stuffers
Block turners
Bag trimmers
Block inverters
Rotary vacuum packers
Speedweigh scales
Vertical form fill forming shoulders

Transport Equipment

Road tankers
Rail tankers
Liquid tankers
PV Valves

General Fabrication

Platforms
Stairways
Structural steel
Custom fabrication
Architectural
Custom benching
Related Pipe work

Services

Project management
Design
Machine guarding to AS 4024 & fabrication
Plant maintenance
Equipment modification
Installation
Shut down work

Processing Equipment

Titan slicers for high speed slicing
SAS powder & liquid applicators
Tumble drums
Blenders
Mixers
Cooking & heating
Boiling & brazing pans
Cooling tunnels
Boilers
Pasteurizing tunnels & baths
Tumble chilling
Cheese block cutting

Inspection Equipment

Leak detectors
Check weighers
Thermo Fisher EScan product analysers
X-Ray
Metal detection

Mercer also supplies a range of leak detection systems check weighers, 90 degree transfer units, and Mercer Critical Hygiene Conveyors



Auckland

142 Neilson Street
Onehunga, Auckland 1601
P O Box 13632
Onehunga, Auckland 1643
Freephone: 0800 236 244
Free fax: 0800 329 236
email: sales@mercers.co.nz

Your local agent: